

AR7ifacts

The Newsletter of the Art Libraries Society of North America, Southeast Chapter
January 2014

Highlights of the ARLIS/NA Southeast Chapter Meeting in New Orleans, November 21–22, 2013

by Kathy Edwards, Research &
Collection Development Librarian,
Architecture Library, Clemson
University, Clemson, S.C.,
2013 President, ARLIS/SE

- Best business meeting room ever, with breakfast buffet served in front of floor-to-ceiling windows looking right out on the Mississippi River. (Cruising pelicans got to be downright distracting.) The Hilton New Orleans Riverside was an excellent venue.
- We welcomed a lot of new and nearly new faces in New Orleans, including two participants from outside our region: Marsha Taichman (Cornell University), who will be preoccupied with a new baby girl at ARLIS/NA conference time in the spring, and Rebecca Cooling, native of Columbia, S.C., currently residing in Chicago (School of the Art Institute). Rebecca also presented a poster.
- Excellent posters! Members agreed, this is a feature to keep in future meetings. Well done, Courtney, Rebecca, and Kaitlyn.
- Walking tour was a consensus favorite. We are most grateful to Professor Klingman.
- Very pleased that several members brought partners along, the better to enjoy New Orleans.

- Always great to have Gilda Santana in any group!
- Jazz crawl was on our own, and any outing that ends in a swell restaurant is a successful outing.
- Excellent group at the Old U.S. Mint, presenting their Colonial Documents Digitization Project. Thanks to Greg Lambousy, Sarah-Elizabeth Gundlach, Melissa Stein, Polly Rolman-Smith, Erin Roussel, and Oa Sjoblom.
- Friday morning at Tulane was a series of impressive presentations by Chris Harter (Amistad Research Center), Lee Miller (head of the Louisiana Research Collections), and Bruce Raeburn (director, Tulane Special Collections, and curator, Hogan Jazz Archive).



*John Klingman and part of the walking tour group.
More photos by Kathy Edwards at
<http://www.flickr.com/photos/ksefore/sets/72157638349526776/>*

(Continued on next page)



Stephanie Raines, Courtney Baron, Emily Luken, Caroline Barratt, and Kaitlyn Parker at Café NOMA at the New Orleans Museum of Art.

- Great lunch at one of the best museum cafés in the country!
- Member presentations were a polished and professional Florida sweep! Rebecca Fitzsimmons (University of Florida), Courtenay McLeland (University of North Florida), and Margarita Mirabal (Florida International University).
- Seth Boonchai and Roman Alokhin aligned their digitization project presentation with NOMA's currently featured photographic exhibition, and impressed us all.
- A number of people along the way asked us how we managed to snag Rebecca Solnit for our conference program.
- Café Degas was so good I had dinner there Friday night AND Saturday night.



Colonial Documents Project team: Oa Sjoblom, Melissa Stein, Polly Rolman-Smith, Erin Roussel, director Greg Lambousy, and curator Sarah-Elizabeth Gundlach, Louisiana Research Center, Old U.S. Mint.

Member News

From **Caroline Barratt**, director, Miller Learning Center, University of Georgia, Athens, Georgia:

I researched and wrote forty-seven biographical sketches for the artists included in the recent exhibition *Cercle et Carré and the International Spirit of Abstract Art* at the Georgia Museum of Art. My work is published in the exhibition catalogue. You can read about the exhibition at <http://georgiamuseum.org/art/exhibitions/on-view/cercle-et-carre-and-the-international-spirit-of-abstract-art>.

From **Olivia Miller**, University of North Carolina School of Information and Library Science:

I'm getting an article published in *Art Documentation* this spring: "How to Collect for Video Game Design Students: An Information Behavior Study." I was awarded the 2013 ARLIS/SE Professional Development Travel Award and presented this research at ARLIS/NA in Pasadena.

From **Peter Klubek**, reference librarian, Baton Rouge Community College, Baton Rouge, Louisiana:

I exhibited three paintings in a group show at the Belmont Race Park in Belmont, N.Y., and I presented a poster session at the LOUIS Users Conference (LUC) in Port Allen, Louisiana, titled "Dedicated Study Space within the Library and the Impact on Grades."

From **John J. Taormina**, director, Visual Media Center, and coordinator, communications & publications, Department of Art, Art History & Visual Studies, Duke University, Durham, N.C.:

I have been appointed the Visual Resources Association's Affiliate Organization Representative to the Art Libraries Society of North America for a two-year term by the VRA Executive Board. Responsibilities include participating in the activities of ARLIS/NA, ensuring steady communi-

cation between the two organizations, and seeking collaborative opportunities.

Floyd Zula was elected to be a lifetime member of ARLIS/SE, as announced on ARLISSE-L December 3, 2013. He sent this message to the list on December 5:

"To All of the Members of the ARLIS/NA Southeast Chapter:

"Even though it may seem a bit commonplace to hear the words 'gratified' and 'honored,' I am still immeasurably pleased to have been honored with a Lifetime Membership in the Southeast Chapter of ARLIS/NA. This bestowal is also a commentary on the continuing warmth, collegiality and professionalism of the membership of the Southeast Chapter that I have experienced year after year despite our relative geographic separation.

"Please do accept this heartfelt thanks to those who have capped my ARLIS connection that extends back to 1975 with such a memorable and enduring marker!

"Very sincerely,
Floyd Zula"



New Members

From **Lacy Ellinwood**, library consultant, Mississippi Library Commission, Jackson, Mississippi:

I am a recent transplant to Jackson, Mississippi, from Buffalo, New York. I work at the Mississippi Library Commission, whose mission is to strengthen and enhance libraries and library services for all Mississippians through committed leadership, service, and advocacy. I have a BA in art history, received an MLS in 2008, and am currently finishing my thesis for a secondary master's degree in humanities from the University of Buffalo. The focus of this degree is on art history and film studies. My research interests within these areas are primarily twentieth-century photography, contemporary cinema, and women's studies.



With my combination of library science and humanities graduate degrees I hope to eventually work in an art library on a college or university campus. If I had to choose a dream job, it would be doing photographic and film restoration at the George Eastman House in Rochester, New York, or working for the Academy of Motion Picture Arts and Sciences Library; who can choose just one? I hope to eventually help ARLIS/SE bring its annual meeting to Jackson. I look forward to meeting many of you at next year's meeting.

Report from the ARLIS/NA Chapters Liaison

by Sarah Sherman,
Reference Librarian, Getty Research
Institute, Los Angeles, California,
Chapters Liaison,
ARLIS/NA Executive Board



Hello Southeast Chapter Members!

As the new Executive Board chapters liaison, I look forward to working with your chapter during my two-year term.

At the 2013 annual conference in Pasadena, the Executive Board had a series of meetings in addition to gathering for two days in Washington, D.C., at the end of September for the mid-year Board Meeting. I wanted to share some highlights with you:

Conferences

Pasadena conference: It was a record-breaking success! We welcomed just over 710 registrants during a week of perfect weather—warm with sunshine. The fundraising efforts totaled \$71,250.

Future conferences: The Washington, D.C., conference planning team is hard at work. It will be a fantastic conference, May 1–5, 2014. For more information, visit the conference website. We come back to the West to meet in Fort Worth, Texas, in 2015. The Executive Board is working to finalize the 2016 location.

Virtual conference: I look forward to seeing many of you in person at the future conferences. However, between D.C. and Fort Worth in fall 2014, we will have the opportunity to meet online. A virtual conference is in development under the leadership of Executive Board education liaison Sarah Falls. An implementation team is being formed.

Fundraising

Chapters have generously sponsored the Welcome Party at the annual conference. The donations have been greatly appreciated. I hope all chapters will consider contributing a minimum of \$200 to the D.C. conference. Get creative with your chapter fundraising throughout the year to support the reception at Dumbarton Oaks, the welcoming event at the conference.

ARLIS/NA Website (AWS)

The redesign is on track. The website content has migrated to the new platform. The new website release is coming soon along with a newly designed ARLIS/NA logo.

New Association Manager

In April 2013, Robert Kopchinski was hired as the ARLIS/NA association manager. He has over twenty-four years of association management experience. Robert's contact information is on the ARLIS/NA website. His email is r.kopchinski@arlisna.org.

The Executive Board will continue to have monthly meetings. As usual, with every meeting we will have a lot to discuss toward the advancement of ARLIS/NA. I will keep you posted!

If you have questions, please do not hesitate to contact me.

Wishing you all the best for a festive fall!

Sarah Sherman
ARLIS/NA Executive Board, Chapters Liaison
Reference Librarian
Getty Research Institute
ssherman@getty.edu

ARLIS/SE Announces 29th Annual LoPresti Award Winners

from Caroline Barratt,
Director, Miller Learning Center,
University of Georgia, Athens, Georgia,
2013 Cochair,
LoPresti Awards Committee

The 29th Annual Mary Ellen Lo Presti Awards received more than forty submissions from twenty-two museums and libraries across the Southeast. The judging panel included cochairs Emily Luken and Caroline Barratt (University of Georgia Libraries), Melissa Tufts (Owens Library, UGA College of Environment and Design), and Teresa Burk and Caley Cannon (SCAD Atlanta). We would like to thank all the institutions for their impressive submissions to this year's competition and thank our judges and the ARLIS/NA Southeast Chapter for their support of this award.

The Southeast Chapter is proud to present the 29th Annual Mary Ellen Lo Presti Award winners:

Winner, Exhibition Catalogue

Georgia Museum of Art. *Art Interrupted: Advancing American Art and the Politics of Cultural Diplomacy*. Athens, Georgia: Georgia Museum of Art, 2012.



The role of American modern art in the fight against communism is the subject of this exhibition and its full-color catalogue. Rather than a general survey of the American avant-garde, this collection reunites the curatorial efforts of art historian J. LeRoy Davidson who, in 1946, purchased paintings he believed would showcase the individualism, creativity, and vitality of American modernism. However, the exhibition he intended to showcase to the world never happened until now. The Jule Collins Smith Museum of Fine Art (Auburn University), the Georgia Museum of Art (University of Georgia), and the Fred Jones Jr. Museum of Art (University of Oklahoma) worked to bring the collection, which had been auctioned in 1948 and dispersed around the country, together again.

The catalogue is beautifully designed and includes scholarly essays and biographical notes on each artist and artwork alongside full-color reproductions. An impressive record of both American art and one man's curatorial vision of art as a political and ideological weapon, this book was the standout in the exhibition catalogue entries and a favorite of our judges.

Honorable Mention, Exhibition Catalogue

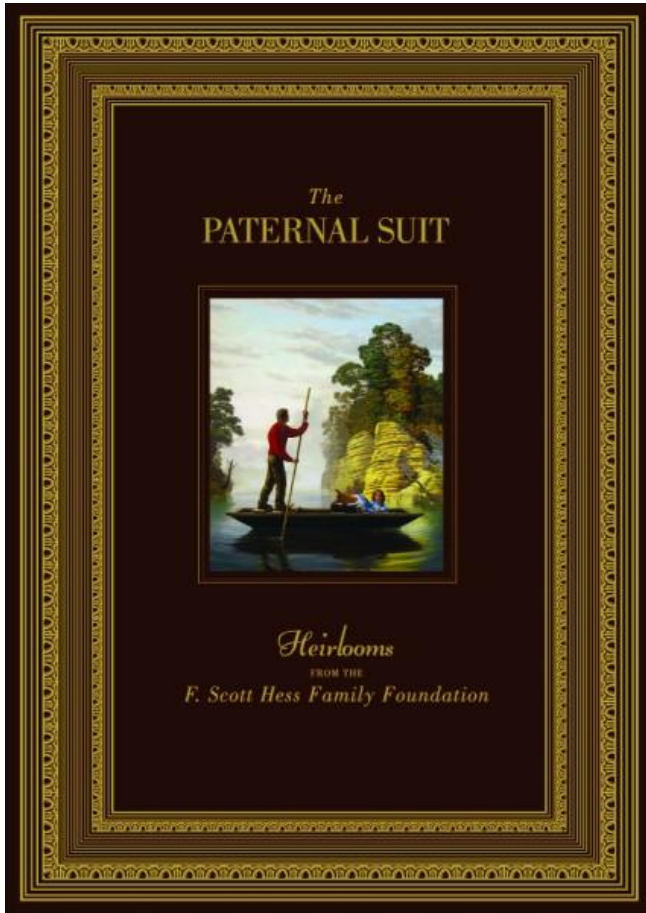
F. Scott Hess et al. *The Paternal Suit: Heirlooms from the F. Scott Hess Family Foundation*. Charleston, S.C.: Copublished by the Halsey Institute of Contemporary Art and the Long Beach Museum of Art, 2012.

Walking a fine line (and sometimes slipping over) between historical truth and artistic fiction, this fascinating catalogue details the history of the Hess family from the seventeenth century to present.

F. Scott Hess, a California-based contemporary artist, created a foundation in his family's name in 2005 and has spent five years performing genealogical research and collecting and creating art-

(Continued on next page)

facts that illustrate how personal history entwines with grand narratives of sex, death, nationhood, heroism, and family.



Much of his research took place in libraries and museums in the Southeast with many of the stories focusing on southern history. The judging panel was transfixed by this record of an exhibition that seemed part history museum, part cabinet of curiosities, and part con, with a captivating approach to narrative within the museum context. Well presented in full color with dozens of illustrations of both real and imaginary historic records, objects, costumes, and stories, this catalogue was a unique submission and worthy of special commendation.

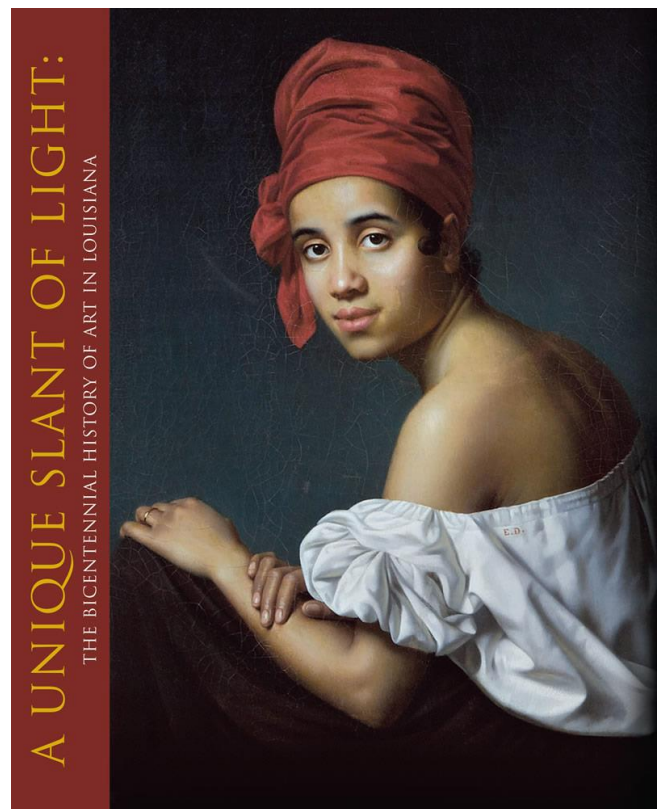
Winner, Monograph

Michael Sartisky, editor in chief; J. Richard Gruber, senior editor; John R. Kemp, associate editor; and Louisiana Endowment for the Humanities. *A Unique Slant of Light: The Bicenten-*

nial History of Art in Louisiana. New Orleans, Louisiana: Louisiana Endowment for the Humanities, 2012.

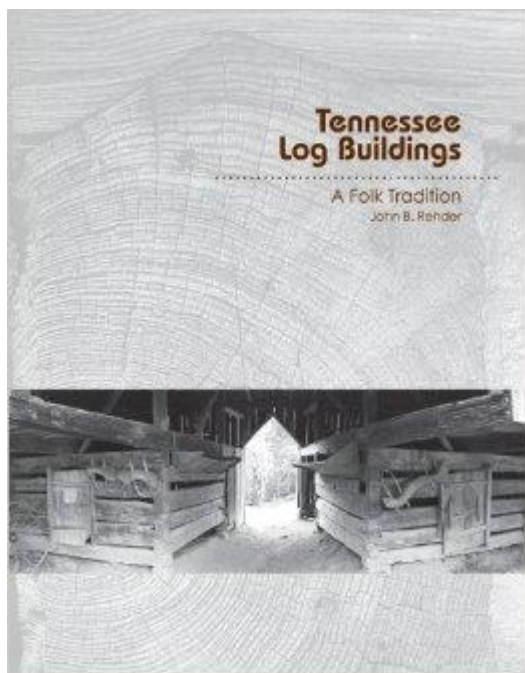
This ambitious publication, the cornerstone of a three-part project celebrating the bicentennial of Louisiana statehood in 2012, impressively commemorates and contextualizes Louisiana art and visual history. Three hundred full-color reproductions from museums, private collections, and archives around the state complement an impressive range of scholarship outlining historical periods, artistic production, and evolving styles, from nineteenth-century Carnival design to a deeply rooted folk craft tradition. As a stand-alone work, the depth and breadth of content matched with a handsome layout and design merit accolades.

The accompanying website, KnowLA: the Digital Encyclopedia of Louisiana History & Culture, and digitized quarterly arts journal, *Louisiana Cultural Vistas*, further enrich *A Unique Slant of Light*, linking to more essays and artist biographies and bibliographies.



Honorable Mention, Monograph

John B. Rehder. *Tennessee Log Buildings: A Folk Tradition*. Knoxville: University of Tennessee Press, 2012.



Focusing on the history, design, and construction of Tennessee log buildings, this volume pays homage to a fading tradition while meticulously documenting the history and remains of Tennessee's treasured folk architecture.

The late Rehder, a professor of geography at the University of Tennessee, Knoxville, presents a compelling overview of the history of vernacular architecture and settlement patterns in the state before launching into the evolution of its log structures, including houses, barns, outbuildings, and other "exceptional log places."

The text is illustrated with over one hundred images, including many of the author's crisp and detailed black-and-white photographs of sites, notch types, and other structural features. Covering forty-two counties and based on extensive Tennessee Historical Commission building survey data as well as the author's forty years of field experience, the book blends rigorous scholarship with a reverent appreciation for Tennessee folkways.

Minutes from ARLIS/SE Business Meeting, New Orleans, Louisiana, November 21, 2013

9:00 a.m.–10:30 a.m.,
Port Room, Riverside Building,
Hilton New Orleans Riverside

Present: Courtney Baron, Caroline Barratt, Rebecca Cooling, Sheila Cork, Kathy Edwards, E. Lee Eltzroth, Rebecca Fitzsimmons, Patricia Gimenez, Karlen Kane, Peter Klubek, Kasia Leousis, Emily Luken, Courtenay McLeland, Marty Miller, Olivia Miller, Margarita Mirabel, Kaitlyn Parker, Stephanie Raines, Marsha Taichman, Floyd Zula

1. Welcome and Introductions

We were welcomed by Kathy Edwards, president, and attendees introduced themselves.

2. Approval of minutes

The minutes of the chapter business meeting held April 27, 2013, at the ARLIS/NA conference in Pasadena were unanimously approved.

3. Reports and Updates

- *Report from the ARLIS/NA Executive Board*
– *Kathy on behalf of Sarah Sherman*

Chapter Bylaws Revision: Review and Update - The Executive Board wants all Chapters to review and update their bylaws. The ARLIS/NA Southeast Executive Committee will appoint a bylaws revision committee of three members, to complete this task. (See item under *New Business*) Chapter bylaw revisions are due before Monday, April 14, 2014. Our revisions will be reviewed and approved by the Executive Board at their meeting at the annual conference in Washington DC in May of 2014. We are to replace any outdated language with current language. The organization of ARLIS/NA has changed over time, which means that names and categories have also changed over time. For example, ARLIS/

(Continued on next page)

NA membership no longer includes an institutional category and the Executive Board no longer has Regional Representatives but now has the Chapters Liaison position.

Affiliate Chapter Members - Also, the designation "affiliate" should not appear in bylaws descriptions of chapter member categories. ("Affiliate" is an old term for non-ARLIS members who are Chapter members). Chapters should instead use terms such as "Friends of the Chapter" or "Associate". And the description of what the "Friend" receives as a benefit for their donation should be somewhat vague, such as "Friends of the Chapter receive mailings and emails that will keep them informed of the activities of the Chapter." We are advised not to put membership categories into bylaws because they could change often.

ARLIS/NA in all Chapter Names - The Executive Board is requiring that all Chapter names include ARLIS/NA. For example, we will become ARLIS/NA Southeast. Also, all Chapters must have a link back to the ARLIS/NA website and our "About Us" section must mention that ours is a chapter of the national association ARLIS/NA. Sarah will work with Nedda Ahmed, ARLIS/NA webmaster to make sure Chapter names are changed accordingly on the national website.

Special Funding Requests - This year the deadline for a Special Funding request was September 1, 2013. Because our chapter normally holds its business meeting after that date, and it is at the business meeting that the new vice president is named, and, according to our bylaws, it is the vice-president's purview to plan the annual meeting, you can see what kind of pickle we're in, when it comes to getting this funding.

ARLIS/NA Website - The work on the new ARLIS/NA website is moving along. When the new website is released in the near future it will also include a new ARLIS/NA logo.

TEI - The Executive Board has signed another two-year contract with TEI, our association management company.

- o At this point, the group unanimously approved a vote to send the national organization a \$300 contribution towards the ARLIS/NA conference opening reception at Dumbarton Oaks.

Venue for 2017 ARLIS/NA Meeting - The Executive Board is now calling on Chapters to propose a location for the 2017 annual conference. It looks like it might be time to turn toward the South or back to the East Coast (no pressure, but please do consider!). However, any proposals from Chapters are welcome and will be considered.

• *Chapter Executive Board Reports*

Treasurer's Report - Courtenay McLe-land

ARLIS/SE Treasurer's Report, 2013
(through 11/12/13)

Checking account 2013: beginning balance \$3541.57 as of 01/01/13; ending balance \$3811.73 as of 11/14/13.

Income: \$2070.00 (dues, conference registrations, raffle tickets, donations)

Expenses: \$1799.84 (ARLIS/NA welcome party donation, LoPresti Postage, Travel Award, web domain renewal, reimbursement and webhosting service, postage, 2012 Conference expenses)

Other assets: Certificate of Deposit, \$2108.45

There are currently 30 members paid through 2013, and 26 members paid through 2014. We have 4 lifetime members.

Secretary's Report - Patricia Gimenez

Thanks for approving the Pasadena minutes.

ARTifacts status and update - Kathy Edwards, for Cary Wilkins

Our newsletter editor, Cary Wilkins, sends his regrets that he's not able to attend. He wants us to know that the next article deadline is Friday, December 6. He would appreciate photographs of the conference events and attendees, from anyone attending. New members are encouraged to submit short bios and a photograph of themselves. All members are encouraged to send Cary articles on interesting projects you're working on, new developments at your libraries, news about anything you've published recently. Short articles can go in the Member News section, and longer articles can stand alone. Please consider writing about what you'll be doing or presenting at the Washington conference in the spring. He would especially like to receive pictures of the LoPresti winning books for a feature on the award winners in the newsletter.

• *Nominations Committee Report & Elections - Sheila Cork (& Stephanie Grimm)*

Sarah Carter has volunteered to be our Vice-President and Karlen Kane volunteers to become the treasurer. Both are unanimously approved.

• *Committee & Appointee Reports*

Listerv Moderator's comments - Kathy Edwards, for Ann Lindell

The list currently has 97 subscribers. Everything seems to be working smoothly. If people have subscription questions or want their default options changed, they can contact Ann directly and she can either tell them how to do it or do it for them. Keep in mind that the default setting suppresses your view of your own posts, even though they do go to the list. To change that setting, contact Ann. Ann sent regrets that she was not able to attend in New Orleans; she's presenting at 2 music library conferences this year and also at ARLIS/NA in DC in the spring. She will be on sabbatical in the spring, working on starting a materials collection for the design disciplines (as

well as unofficially spending some quality time in her studio.)

Webmaster's update - Kathy Edwards, for Stephanie Grimm

We presented final revisions for the ARLIS/SE website with its new design and layout at the ARLIS/NA annual conference in Pasadena, April 2013, and received approval from the group and the executive committee to proceed with the final updates. From May through August, more back-end work was necessary to complete our transition from the old server and system to our new, easier-to-manage platform and on-cloud servers. The new site went live in July 2013, with only a few minor hitches in the rollout.

Meeting minutes and previous chapter conference schedules from the old site were converted from HTML documents to PDFs. We are still missing meeting minutes from a few years: ARLIS/NA Boston (2010), ARLIS/NA Pittsburgh (2000) and ARLIS/SE Sarasota (1998). If any members have these or know where they may be accessed, please contact the webmaster with those documents.

Chapter history, awards, and the LoPresti pages are all up-to-date with images and award information pulled from the old site. The member directory is current as of November 15, 2013.

Going forward, we have both small and large goals to continue to improve the site's functionality and content:

- Currently, the site is loading very slowly for some users. We're working with the hosting company to pinpoint why this is happening, but if any members are noticing this delay or page timeouts, please contact the webmaster with that information. If

(Continued on next page)

we can document where and when the lag is happening, it may help to root out the problem.

- To ensure a smooth transition between appointments, Stephanie is writing up documentation for the website, detailing how to manage updates and changes to the structure, and compiling a list of our credentials/login information for the webhost, Wordpress, our Domain Name Server provider, the Flickr page, and any other social media or web accounts managed by the Webmaster.
- There are many "orphaned" images from the old site, without contextual information and metadata. Over the next few months, these images will be uploaded to Flickr and shared with the group - hopefully, we can crowd source the tagging and figure out when and where these images were taken, and which members are in the photos. We will also investigate a photo-management platform for the website, or directly integrate Flickr with our current structure.
- Forms for the Virtual Mentoring Program are hosted on the site, and depending on the growth and needs of this program, we can explore other ways that the site can better support the project.

New proposals for the site:

- To provide more dynamic content, we would like to link the website's feed to the ARLIS/SE Facebook page, and make that link more visible on the website.
- Solicit members for posts or content for the site. Currently, the site is fairly static, with most of the updates happening near the conference or to the member directory. We can consider spotlighting special projects or initiatives happening at our member's institutions, new publications, or news and kudos for other chapters or the organization on the whole.

- Add a page for new members/student members with links to relevant organizations (e.g. ArLiSNAP), or information on any art library student organizations or groups in any of the southeast library schools.

LoPresti Awards 2013 Status Report - Caroline Barratt & Emily Luken

Winner - Exhibition Catalogue

Art Interrupted: Advancing American Art and the Politics of Cultural Diplomacy (Georgia Museum of Art, Auburn University, University of Oklahoma)

Honorable Mention - Exhibition Catalogue

The Paternal Suit: Heirlooms from the F. Scott Hess Family Foundation (Halsey Institute of Contemporary Art - The College of Charleston)

Winner - Monograph

A Unique Slant of Light: The Bicentennial History of Art in Louisiana (Louisiana Endowment for the Humanities)

Honorable Mention - Monograph

Tennessee Log Buildings: A Folk Tradition (University of Tennessee Press)

Travel Awards Update - Margarita Mirabal & Olivia Miller

Margarita and Olivia await finalized dates to publish award announcement. They plan to follow the same guidelines as previous years, offering the award only to students, those without other funding, or presenters. The \$500 award is for the national conference only, not regional meetings.

SE Chapter's Informal Mentoring program status - E. Lee Eltzroth

Early trouble with the Google response forms is now under control. So far, there have been four applicants; two people applied to be mentors, and two have applied to be mentees. One mentor applicant dropped out, but a first match has been made. Lee requests more applicants for both role of mentor and mentee. Lee will continue to do matching for now, but in the future would like to pass this

role along to a younger, more active member. She continues to await a report from ARLIS/NA on a pilot program transitioning the virtual mentoring program into one loosely organized around the chapters.

4. New Business

- *Proposed: Lifetime membership for Floyd Zula*

Proposal is approved by members present at meeting, but need additional support from the membership as the bylaws require a majority vote of the entire membership.

- *Chapter Bylaws Review required by ARLIS/NA Executive Board*

Chapter Bylaws Revision Committee:
Marty Miller (chair), Patricia Gimenez, and Peter Klubek

- *Venue for ARLIS/NA Southeast Chapter 2014 annual meeting*

Discussion of this should include the newly elected Vice President, Sarah Carter, who is not present; no response when this question was posed to the listserv recently.

5. Conference Updates & Reminders - Sheila Cork

6. Adjournment

Minutes recorded and submitted by Patricia Gimenez (pgimenez@scad.edu)

**ARTifacts is published twice a year.
Next submission deadline: May 16, 2014.**

**Please send your contributions to:
wcary@themorris.org**

**Cary Wilkins
Morris Museum of Art
1 10th St. Ste. 320
Augusta, GA 30901**

Become a Member of ARLIS/SE

Name: _____

Title: _____

Institution: _____

Work Address: _____

Phone: _____ Fax: _____

Home Address: _____

Home Phone: _____

E-mail: _____

I prefer mailings at ___work ___home.

Are you a member of ARLIS/NA? ___yes ___no

**Please send a check for \$15.00 to the
ARLIS/SE Treasurer:**

**D. Courtenay McLeland
Thomas G. Carpenter Library
University of North Florida
1 UNF Drive
Jacksonville, FL 32224-2645**



Riverside at the Riverside Hilton, New Orleans.